



Ref. Certif. No.

JPTUV-068187

IEC SYSTEM FOR MUTUAL RECOGNITION OF TEST CERTIFICATES FOR ELECTRICAL EQUIPMENT (IECEE) CB SCHEME

SYSTEME CEI D'ACCEPTATION MUTUELLE DE CERTIFICATS D ESSAIS DES EQUIPEMENTS ELECTRIQUES (IECEE) METHODE OC

CB TEST CERTIFICATE

CERTIFICAT D'ESSAI OC

Product
Produit

Lithium-ion polymer battery

Name and address of the applicant
Nom et adresse du demandeur

Shenzhen Honcell Energy Co., Ltd.
612, Bldg. A, Weidonglong
Industrial Zone, Meilong Ave. 194 #, Longhua New District, Shenzhen
518109, P.R. China

Name and address of the manufacturer
Nom et adresse du fabricant

Shenzhen Honcell Energy Co., Ltd.
612, Bldg. A, Weidonglong
Industrial Zone, Meilong Ave. 194 #, Longhua New District, Shenzhen
518109, P.R. China

Name and address of the factory
Nom et adresse de l'usine

Shenzhen Honcell Energy Co., Ltd.
612, Bldg. A, Weidonglong
Industrial Zone, Meilong Ave. 194 #, Longhua New District, Shenzhen
518109, P.R. China

Ratings and principal characteristics
Valeurs nominales et caractéristiques principales

3.7V, 140mAh, 0.52Wh

Trademark (if any)
Marque de fabrique (si elle existe)

Type of Manufacturer's Testing Laboratories used
Type de programme du laboratoire d'essais constructeur

N/A

Model / Type Ref.
Ref. de type

HCP402025W

Additional information (if necessary may also be reported on page 2)
Les informations complémentaires (si nécessaire, peuvent être indiqués sur la 2^{ème} page)

A sample of the product was tested and found to be in conformity with
Un échantillon de ce produit a été essayé et a été considéré conforme à la

IEC 62133:2012
National differences see test report

As shown in the Test Report Ref. No. which forms part of this Certificate
Comme indiqué dans le Rapport d'essais numéro de référence qui constitue partie de ce Certificat

17053195 001

This CB Test Certificate is issued by the National Certification Body
Ce Certificat d'essai OC est établi par l'Organisme National de Certification



TÜV Rheinland Japan Ltd.
Global Technology Assessment Center
4-25-2 Kita-Yamata, Tsuzuki-ku
Yokohama 224-0021 Japan
Phone + 81 45 914-3888
Fax + 81 45 914-3354
Mail: info@jpn.tuv.com
Web: www.tuv.com

Tim Feng

Date: 11.12.2015

Signature: Tim Feng



Test Report issued under the responsibility of:



**TEST REPORT
IEC 62133**

Secondary cells and batteries containing alkaline or other non-acid electrolytes – Safety requirements for portable sealed secondary cells, and for batteries made from them, for use in portable applications

Report Number: 17053195 001

Date of issue: 2015-12-11

Total number of pages: 24 pages

Applicant's name.....: Shenzhen Honcell Energy Co., Ltd.

Address: 612, Bldg. A, Weidonglong Industrial Zone, Meilong Ave.194 #,
Longhua New District, Shenzhen, 518109, P.R. China

Test specification:

Standard: IEC 62133: 2012 (Second Edition)

Test procedure: CB Scheme

Non-standard test method.....: N/A

Test Report Form No.....: IEC62133B

Test Report Form(s) Originator: UL(Demko)

Master TRF.....: Dated 2013-03

Copyright © 2013 Worldwide System for Conformity Testing and Certification of Electrotechnical Equipment and Components (IECEE), Geneva, Switzerland. All rights reserved.

This publication may be reproduced in whole or in part for non-commercial purposes as long as the IECEE is acknowledged as copyright owner and source of the material. IECEE takes no responsibility for and will not assume liability for damages resulting from the reader's interpretation of the reproduced material due to its placement and context.

If this Test Report Form is used by non-IECEE members, the IECEE/IEC logo and the reference to the CB Scheme procedure shall be removed.

This report is not valid as a CB Test Report unless signed by an approved CB Testing Laboratory and appended to a CB Test Certificate issued by an NCB in accordance with IECEE 02.

Test item description: Lithium-ion polymer battery

Trade Mark: N/A

Manufacturer.....: Same as applicant

Address: Same as applicant

Model/Type reference: HCP402025W

Ratings: 3.7V, 140mAh, 0.52Wh

Testing procedure and testing location:		
<input checked="" type="checkbox"/>	CB Testing Laboratory:	TÜV Rheinland (Shenzhen) Co., Ltd.
Testing location/ address		East of F/1, F/2~F/4, Building 1, Cybio Technology Building No. 6 Langshan No.2 Road, North Hi-tech Industry Park 518057 Shenzhen Nanshan District CHINA
<input type="checkbox"/>	Associated CB Testing Laboratory:	
Testing location/ address		
Tested by (name + signature).....:		Charlie Zeng
Approved by (name + signature)		Jason Tang
		<i>Charlie Zeng</i>
		<i>Jason Tang</i>
<input type="checkbox"/>	Testing procedure: TMP	
Testing location/ address		
Tested by (name + signature).....:		
Approved by (name + signature)		
<input type="checkbox"/>	Testing procedure: WMT	
Testing location/ address		
Tested by (name + signature).....:		
Witnessed by (name + signature)		
Approved by (name + signature)		
<input type="checkbox"/>	Testing procedure: SMT	
Testing location/ address		
Tested by (name + signature).....:		
Approved by (name + signature)		
Supervised by (name + signature).....:		

List of Attachments (including a total number of pages in each attachment): Attachment 1: Photo documentation (3 pages).	
Summary of testing:	
Tests performed (name of test and test clause): cl.5.6.2 Design recommendation(Lithium system); cl.8.1 Charging procedure for test purposes (for Cell and Pack); cl.8.2.1 Continuous charging at constant voltage (Cells); cl.8.2.2 Moulded case stress at high ambient temperature (battery); cl.8.3.1 External short circuit (Cells); cl.8.3.2 External short circuit (battery); cl.8.3.3 Free fall; cl.8.3.4 Thermal abuse (Cells); cl.8.3.5 Crush (Cells); cl.8.3.6 Over-charging of battery cl.8.3.7 Forced discharge (Cells); cl.8.3.8 Transport tests (Cells); The electrolyte type of this cell doesn't belong to polymer, and the applicant declares that this cell isn't to be sold in France, Japan, Republic of Korea and Switzerland Tests are made with the number of cells and batteries specified in IEC 62133: 2012 (Second Edition) Table 2.	Testing location: TÜV Rheinland (Shenzhen) Co., Ltd. East of F/1, F/2~F/4, Building 1, Cybio Technology Building No. 6 Langshan No.2 Road, North Hi-tech Industry Park 518057 Shenzhen Nanshan District CHINA
Summary of compliance with National Differences: BE, BY, CN, DE, DK, FI, GB, HU, NL, NO, SE, SG BE=Belgium, BY=Belarus, CN=China, DE=Germany, DK=Denmark, FI=Finland, GB=United Kingdom, HU=Hungary, NL=The Netherlands, NO=Norway, SE=Sweden, SG=Singapore. <input checked="" type="checkbox"/> The product fulfils the requirements of <u>EN 62133: 2013</u>	

Copy of marking plate:

Lithium-ion polymer battery

HCP402025W

- 3.7V 140mAh 0.52Wh

1ICP4/21/26

+ 2015.10

Shenzhen Honcell Energy Co., Ltd.

Test item particulars.....:	
Classification of installation and use.....:	To be defined in final product
Supply connection.....:	DC lead wire
Recommend charging method declared by the manufacturer	Charging the battery with 28mA constant current until 4.2V, then constant voltage until charge current reduces to 1.4mA at ambient 20°C±5°C
Discharge current (0,2 I_t A)	28mA
Specified final voltage	2.3V
Chemistry	<input type="checkbox"/> nickel systems <input checked="" type="checkbox"/> lithium systems
Recommend of charging limit for lithium system	
Upper limit charging voltage per cell.....:	4.25V
Maximum charging current	238mA
Charging temperature upper limit	45°C
Charging temperature lower limit.....:	0°C
Polymer cell electrolyte type	<input type="checkbox"/> gel polymer <input type="checkbox"/> solid polymer <input checked="" type="checkbox"/> N/A
Possible test case verdicts:	
- test case does not apply to the test object.....:	N/A
- test object does meet the requirement.....:	P (Pass)
- test object does not meet the requirement.....:	F (Fail)
Testing.....:	
Date of receipt of test item	2015-10-28
Date (s) of performance of tests	2015-10-29 to 2015-11-15
General remarks:	
The test results presented in this report relate only to the object tested. This report shall not be reproduced, except in full, without the written approval of the Issuing testing laboratory. "(See Enclosure #)" refers to additional information appended to the report. "(See appended table)" refers to a table appended to the report. Throughout this report a <input type="checkbox"/> comma / <input checked="" type="checkbox"/> point is used as the decimal separator.	
Manufacturer's Declaration per sub-clause 4.2.5 of IEC62133B:	
The application for obtaining a CB Test Certificate includes more than one factory location and a declaration from the Manufacturer stating that the sample(s) submitted for evaluation is (are) representative of the products from each factory has been provided :	<input type="checkbox"/> Yes <input checked="" type="checkbox"/> Not applicable
When differences exist; they shall be identified in the General product information section.	
Name and address of factory (ies) : Same as applicant	

General product information:

The battery is constructed with one Li-ion cell in 1S1P, and has overcharge, over-discharge, over current and short-circuits protection circuit.

The main features of the battery pack are shown as below (clause 8.1.1):

Model	Nominal capacity	Nominal voltage	Nominal Charge Current	Nominal Discharge Current	Maximum Charge Current	Maximum Discharge Current	Maximum Charge Voltage	Cut-off Voltage
HCP402025W	140mAh	3.7V	28mA	28mA	238mA	280mA	4.2V	2.3V

The main features of the battery pack are shown as below (clause 8.1.2):

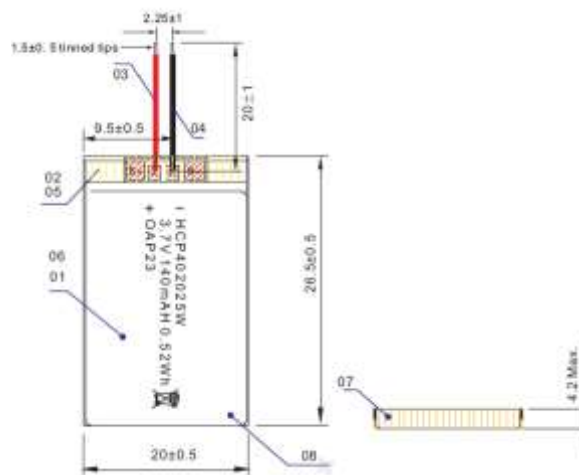
Model	Upper limit charge voltage	Taper-off current	Lower charge temperature	Upper charge temperature
HCP402025W	4.25V	7mA	0°C	45°C

The main features of the cell in the battery are shown as below (clause 8.1.1):

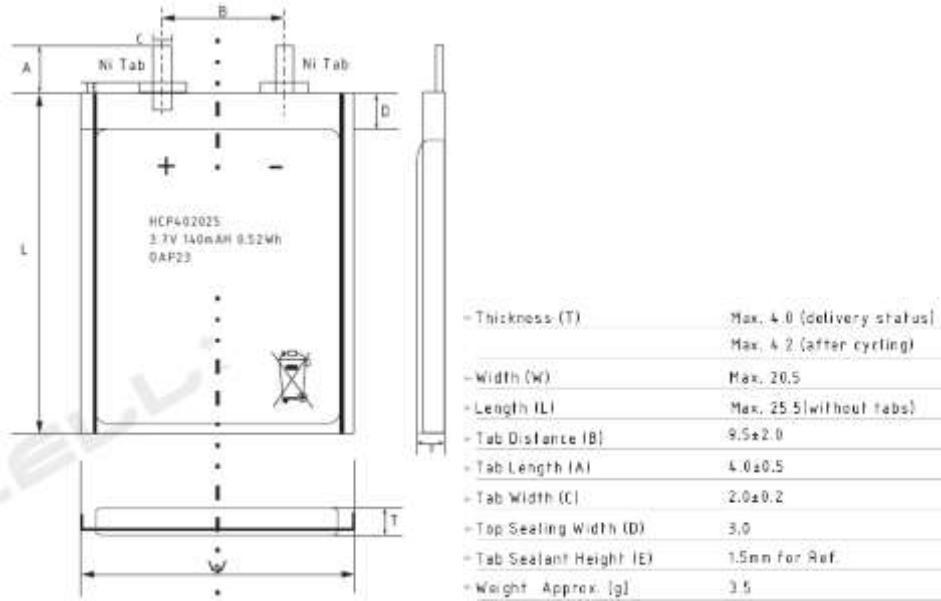
Model	Nominal capacity	Nominal voltage	Nominal Charge Current	Nominal Discharge Current	Maximum Charge Current	Maximum Discharge Current	Maximum Charge Voltage	Cut-off Voltage
HCP402025	140mAh	3.7V	28mA	28mA	238mA	280mA	4.25V	2.3V

The main features of the cell in the battery are shown as below (clause 8.1.2):

Model	Upper limit charge voltage	Taper-off current	Lower charge temperature	Upper charge temperature
HCP402025	4.25V	7mA	0°C	45°C

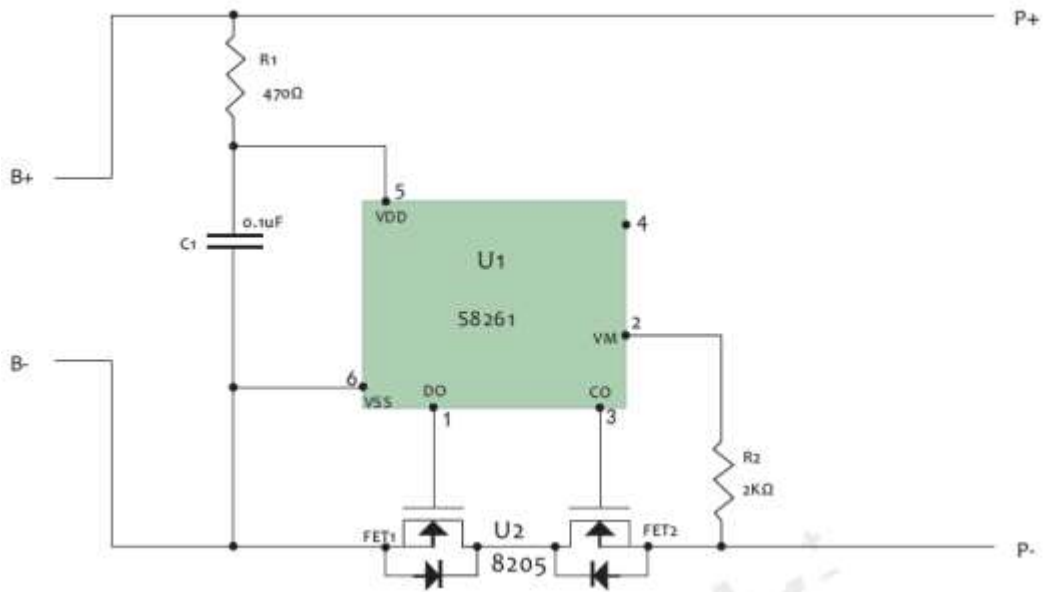
Construction:


Battery



Cell

Circuit diagram:



IEC 62133: 2012			
Clause	Requirement + Test	Result - Remark	Verdict
4	Parameter measurement tolerances		P
	Parameter measurement tolerances		P
5	General safety considerations		P
5.1	General		P
5.2	Insulation and wiring		P
	The insulation resistance between the positive terminal and externally exposed metal surfaces of the battery (excluding electrical contact surfaces) is not less than 5 MΩ	No metal case exists.	N/A
	Insulation resistance (MΩ)		—
	Internal wiring and insulation are sufficient to withstand maximum anticipated current, voltage and temperature requirements		P
	Orientation of wiring maintains adequate creepage and clearance distances between conductors		P
	Mechanical integrity of internal connections accommodates reasonably foreseeable misuse		P
5.3	Venting		P
	Battery cases and cells incorporate a pressure relief mechanism or are constructed so that they relieve excessive internal pressure at a value and rate that will preclude rupture, explosion and self-ignition	Venting mechanism exists on the narrow side of pouch cell.	P
	Encapsulation used to support cells within an outer casing does not cause the battery to overheat during normal operation nor inhibit pressure relief		N/A
5.4	Temperature/voltage/current management		P
	Batteries are designed such that abnormal temperature rise conditions are prevented	Overcharge, overdischarge, over current and short-circuit proof circuit used in this battery. See tests of clause 8.	P
	Batteries are designed to be within temperature, voltage and current limits specified by the cell manufacturer	See above.	P
	Batteries are provided with specifications and charging instructions for equipment manufacturers so that associated chargers are designed to maintain charging within the temperature, voltage and current limits specified	The charging limits are specified in the manufacturer's specifications.	P
5.5	Terminal contacts		P
	Terminals have a clear polarity marking on the external surface of the battery	The "+" and "-" polarity explicitly marked on surface of battery	P
	The size and shape of the terminal contacts ensure that they can carry the maximum anticipated current		P

IEC 62133: 2012			
Clause	Requirement + Test	Result - Remark	Verdict
	External terminal contact surfaces are formed from conductive materials with good mechanical strength and corrosion resistance		P
	Terminal contacts are arranged to minimize the risk of short circuits		P
5.6	Assembly of cells into batteries		P
5.6.1	If there is more than one battery housed in a single battery case, cells used in the assembly of each battery have closely matched capacities, be of the same design, be of the same chemistry and be from the same manufacturer	Only one cell in battery	N/A
	Each battery has an independent control and protection		N/A
	Manufacturers of cells make recommendations about current, voltage and temperature limits so that the battery manufacturer/designer may ensure proper design and assembly		N/A
	Batteries that are designed for the selective discharge of a portion of their series connected cells incorporate separate circuitry to prevent the cell reversal caused by uneven discharges		N/A
	Protective circuit components are added as appropriate and consideration given to the end-device application		N/A
	When testing a battery, the manufacturer of the battery provides a test report confirming the compliance according to this standard		N/A
5.6.2	Design recommendation for lithium systems only		P
	For the battery consisting of a single cell or a single cellblock: - Charging voltage of the cell does not exceed the upper limit of the charging voltage specified in Clause 8.1.2, Table 4; or	Charging voltage: 4.25V, not exceed 4.25V specified in Clause 8.1.2, Table 4.	P
	- Charging voltage of the cell does not exceed the different upper limit of the charging voltage determined through Clause 8.1.2, NOTE 1.		N/A
	For the battery consisting of series-connected plural single cells or series-connected plural cellblocks: - The voltages of any one of the single cells or single cellblocks does not exceed the upper limit of the charging voltage, specified in Clause 8.1.2, Table 4, by monitoring the voltage of every single cell or the single cellblocks; or		N/A
	- The voltages of any one of the single cells or single cellblocks does not exceed the different upper limit of the charging voltage, determined through Clause 8.1.2, NOTE 1, by monitoring the voltage of every single cell or the single cellblocks		N/A

IEC 62133: 2012			
Clause	Requirement + Test	Result - Remark	Verdict
	For the battery consisting of series-connected plural single cells or series-connected plural cellblocks: - Charging is stopped when the upper limit of the charging voltage, specified in Clause 8.1.2, Table 4, is exceeded for any one of the single cells or single cellblocks by measuring the voltage of every single cell or the single cellblocks; or		N/A
	- Charging is stopped when the upper limit of the different charging voltage, determined through Clause 8.1.2, NOTE 1, is exceeded for any one of the single cells or single cellblocks by measuring the voltage of every single cell or the single cellblocks		N/A
5.7	Quality plan		P
	The manufacturer prepares and implements a quality plan that defines procedures for the inspection of materials, components, cells and batteries and which covers the whole process of producing each type of cell or battery	Complied. ISO 9001: 2008 certificate provided.	P
6	Type test conditions		P
	Tests were made with the number of cells or batteries specified in Table 1 for nickel-cadmium and nickel-metal hydride systems and Table 2 for lithium systems, using cells or batteries that are not more than six months old	Complied. Lithium system.	P
	Unless noted otherwise in the test methods, testing was conducted in an ambient of 20°C ± 5°C.	Tests are carried out at 20°C ± 5°C.	P
7	Specific requirements and tests (nickel systems)		N/A
7.1	Charging procedure for test purposes	Lithium system.	N/A
7.2	Intended use		N/A
7.2.1	Continuous low-rate charging (cells)		N/A
	Results: No fire. No explosion		N/A
7.2.2	Vibration		N/A
	Results: No fire. No explosion. No leakage	(See Table 7.2.2)	N/A
7.2.3	Moulded case stress at high ambient temperature		N/A
	Oven temperature (°C)		—
	Results: No physical distortion of the battery casing resulting in exposure if internal components		N/A
7.2.4	Temperature cycling		N/A
	Results: No fire. No explosion. No leakage.		N/A
7.3	Reasonably foreseeable misuse		N/A
7.3.1	Incorrect installation cell		N/A

IEC 62133: 2012			
Clause	Requirement + Test	Result - Remark	Verdict
	The test was carried out using: - Four fully charged cells of the same brand, type, size and age connected in series, with one of them reversed; or		N/A
	- A stabilized dc power supply.		N/A
	Results: No fire. No explosion..... :	(See Table 7.3.1)	N/A
7.3.2	External short circuit		N/A
	The cells or batteries were tested until one of the following occurred: - 24 hours elapsed; or		N/A
	- The case temperature declined by 20% of the maximum temperature rise		N/A
	Results: No fire. No explosion..... :	(See Table 7.3.2)	N/A
7.3.3	Free fall		N/A
	Results: No fire. No explosion.		N/A
7.3.4	Mechanical shock (crash hazard)		N/A
	Results: No fire. No explosion. No leakage.		N/A
7.3.5	Thermal abuse		N/A
	Oven temperature (°C)..... :		—
	Results: No fire. No explosion.		N/A
7.3.6	Crushing of cells		N/A
	The crushing force was released upon: - The maximum force of 13 kN ± 1 kN has been applied; or		N/A
	- An abrupt voltage drop of one-third of the original voltage has been obtained		N/A
	The cell is prismatic type and a second set of samples was tested, rotated 90° around longitudinal axis compared to the first set		N/A
	Results: No fire. No explosion..... :	(See Table 7.3.6)	N/A
7.3.7	Low pressure		N/A
	Chamber pressure (kPa)..... :		—
	Results: No fire. No explosion. No leakage.		N/A
7.3.8	Overcharge		N/A
	Results: No fire. No explosion..... :	(See Table 7.3.8)	N/A
7.3.9	Forced discharge		N/A
	Results: No fire. No explosion..... :	(See Table 7.3.9)	N/A
8	Specific requirements and tests (lithium systems)		P
8.1	Charging procedures for test purposes		P

IEC 62133: 2012			
Clause	Requirement + Test	Result - Remark	Verdict
8.1.1	First procedure: This charging procedure applied to tests other than those specified in 8.1.2	Complied.	P
8.1.2	Second procedure: This charging procedure applied to the tests of 8.3.1, 8.3.2, 8.3.4, 8.3.5, and 8.3.9		P
	If a cell's specified upper and/or lower charging temperature exceeds values for the upper and/or lower limit test temperatures of Table 4, the cells were charged at the specified values plus 5 °C for the upper limit and minus 5 °C for the lower limit	45°C test used for upper limit tests; -5°C test used for lower limit tests.	P
	A valid rationale was provided to ensure the safety of the cell (see Figure A.1)		P
	For a different upper limit charging voltage (i.e. other than for lithium cobalt oxide systems at 4,25 V), the applied upper limit charging voltage and upper limit charging temperatures were adjusted accordingly	4.25V applied.	N/A
	A valid rationale was provided to ensure the safety of the cell (see Figure A.1)		N/A
8.2	Intended use		P
8.2.1	Continuous charging at constant voltage (cells)		P
	Results: No fire. No explosion.....	(See Table 8.2.1)	P
8.2.2	Moulded case stress at high ambient temperature (battery)	No Moulded case exists.	N/A
	Oven temperature (°C).....		N/A
	Results: No physical distortion of the battery casing resulting in exposure if internal components		N/A
8.3	Reasonably foreseeable misuse		P
8.3.1	External short circuit (cell)		P
	The cells were tested until one of the following occurred: - 24 hours elapsed; or		N/A
	- The case temperature declined by 20% of the maximum temperature rise		P
	Results: No fire. No explosion.....	(See Table 8.3.1)	P
8.3.2	External short circuit (battery)		P
	The cells were tested until one of the following occurred: - 24 hours elapsed; or		P
	- The case temperature declined by 20% of the maximum temperature rise		N/A

IEC 62133: 2012			
Clause	Requirement + Test	Result - Remark	Verdict
	In case of rapid decline in short circuit current, the battery pack remained on test for an additional one hour after the current reached a low end steady state condition		N/A
	Results: No fire. No explosion..... :		P
8.3.3	Free fall		P
	Results: No fire. No explosion.	No fire. No explosion.	P
8.3.4	Thermal abuse (cells)		P
	The cells were held at 130°C ± 2°C for: - 10 minutes; or		P
	- 30 minutes for large cells (gross mass of more than 500 g as defined in IEC 62281)		N/A
	Oven temperature ()	130°C	—
	Gross mass of cell (g)	<500g, small cell.	—
	Results: No fire. No explosion.	No fire. No explosion.	P
8.3.5	Crush (cells)		P
	The crushing force was released upon: - The maximum force of 13 kN ± 1 kN has been applied; or		P
	- An abrupt voltage drop of one-third of the original voltage has been obtained; or		N/A
	- 10% of deformation has occurred compared to the initial dimension		N/A
	Results: No fire. No explosion..... :	(See Table 8.3.5)	P
8.3.6	Over-charging of battery		P
	Test was continued until the temperature of the outer casing: - Reached steady state conditions (less than 10°C change in 30-minute period); or		P
	- Returned to ambient		N/A
	Results: No fire. No explosion..... :	(See Table 8.3.6)	P
8.3.7	Forced discharge (cells)		P
	Results: No fire. No explosion..... :	(See Table 8.3.7)	P
8.3.8	Transport tests		P
	Manufacturer's documentation provided to show compliance with UN Recommendations on Transport of Dangerous Goods	T-1, T-2, T-3 and T-4 tested complied. No leakage, no venting, no short-circuit, no rupture, no explosion and no fire. T-5, See Table 8.3.8. T-6, Taking 13kN as testing condition, refer to 8.3.5 for the testing result.	P

IEC 62133: 2012			
Clause	Requirement + Test	Result - Remark	Verdict
8.3.9	Design evaluation – Forced internal short circuit (cells)	The applicant declares that this battery isn't to be sold in France, Japan, Republic of Korea and Switzerland.	N/A
	The cells complied with national requirement for:		—
	The pressing was stopped upon: - A voltage drop of 50 mV has been detected; or		N/A
	- The pressing force of 800 N (cylindrical cells) or 400 N (prismatic cells) has been reached		N/A
	Results: No fire :		N/A

9	Information for safety		P
	The manufacturer of secondary cells ensures that information is provided about current, voltage and temperature limits of their products.	Information for safety mentioned in manufacturer's specifications.	P
	The manufacturer of batteries ensures that equipment manufacturers and, in the case of direct sales, end-users are provided with information to minimize and mitigate hazards.	Information for safety mentioned in manufacturer's specifications.	P
	Systems analyses performed by device manufacturers to ensure that a particular battery design prevents hazards from occurring during use of a product		N/A
	As appropriate, information relating to hazard avoidance resulting from a system analysis is provided to the end user :		N/A

10	Marking		P
10.1	Cell marking		N/A
	Cells marked as specified in the applicable cell standards: IEC 61951-1, IEC 61951-2 or IEC 61960.	The final product is battery	N/A
10.2	Battery marking		P
	Batteries marked in accordance with the requirements for the cells from which they are assembled.	The battery is marked in accordance with IEC 61960, also see page 4.	P
	Batteries marked with an appropriate caution statement.		N/A
10.3	Other information		P
	Storage and disposal instructions marked on or supplied with the battery.	Information for disposal instructions mentioned in manufacturer's specifications.	P
	Recommended charging instructions marked on or supplied with the battery.	Information for recommended charging instructions mentioned in manufacturer's specifications.	P

IEC 62133: 2012			
Clause	Requirement + Test	Result - Remark	Verdict
11	Packaging		P
	The materials and packaging design are chosen so as to prevent the development of unintentional electrical conduction, corrosion of the terminals and ingress of environmental contaminants.		P

Annex A	Charging range of secondary lithium ion cells for safe use		P
A.1	General		P
A.2	Safety of lithium-ion secondary battery	Complied.	P
A.3	Consideration on charging voltage	Complied.	P
A.3.1	General	Charging voltage is 4.2V	P
A.3.2	Upper limit charging voltage	4.25V	P
A.3.2.1	General		P
A.3.2.2	Explanation of safety viewpoint		N/A
A.3.2.3	Safety requirements, when different upper limit charging voltage is applied		N/A
A.4	Consideration of temperature and charging current		P
A.4.1	General		P
A.4.2	Recommended temperature range	See A.4.2.2.	P
A.4.2.1	General		P
A.4.2.2	Safety consideration when a different recommended temperature range is applied	Charging temperature declared by client is: 0-45°C.	P
A.4.3	High temperature range	Not higher than the temperature range specific in this standard.	N/A
A.4.3.1	General		N/A
A.4.3.2	Explanation of safety viewpoint		N/A
A.4.3.3	Safety considerations when specifying charging conditions in high temperature range		N/A
A.4.3.4	Safety consideration when specifying new upper limit in high temperature range		N/A
A.4.4	Low temperature range	Charge lower temperature declared by client is: 0°C	P
A.4.4.1	General		P
A.4.4.2	Explanation of safety viewpoint		P
A.4.4.3	Safety considerations, when specifying charging conditions in low temperature range		P
A.4.4.4	Safety considerations when specifying a new lower limit in the low temperature range	-5°C applied.	P
A.4.5	Scope of the application of charging current		P

IEC 62133: 2012			
Clause	Requirement + Test	Result - Remark	Verdict
A.5	Sample preparation		N/A
A.5.1	General		N/A
A.5.2	Insertion procedure for nickel particle to generate internal short		N/A
	The insertion procedure carried out at 20°C±5°C and under -25 °C of dew point		N/A
A.5.3	Disassembly of charged cell		N/A
A.5.4	Shape of nickel particle		N/A
A.5.5	Insertion of nickel particle to cylindrical cell		N/A
A.5.5.1	Insertion of nickel particle to winding core		N/A
A.5.5.2	Mark the position of nickel particle on the both end of winding core of the separator		N/A
A.5.6	Insertion of nickel particle to prismatic cell		N/A

TABLE: Critical components information					P
Object/part no.	Manufacturer/trademark	Type/model	Technical data	Standard	Mark(s) of conformity ¹⁾
Lead wire (Red & Black)	Guo wei xin	1571	28AWG, V-1, 80°C, 30V	--	--
PCM	ShenZhen Duolixin Electronic Technology Co., Ltd	8261AAGMD-G2GT2x+8205A	Overcharge detection voltage: 4.28±0.05V, Over-discharge detection voltage: 2.3±0.05V, Over-current detection current: 2~5A	--	--
PCB	Shenzhen dolly xin electronic technology co., LTD	1636	V-0, 130°C	--	--
Protect IC (U1)	SEIKO	S-8261AAGMD-G2GT2x	Overcharge detection voltage: 4.28±0.025V, Overdischarge detection voltage: 2.8±0.05V, Overcurrent detection voltage: 0.16±0.03V, Short protection voltage: 0.9-1.5V, T _{opr} : -40~+85°C	--	Tested with appliance
MOSFET (U2)	MT	8205A	V _{DS} : 20V, V _{GS} : ±12V, I _D : 6A, T _J : -55-150°C	--	Tested with appliance
Cell	Shenzhen Honcell Energy Co., Ltd.	HCP402025	Rated Voltage: 3.7Vd.c., Rated Capacity: 140mAh	IEC 62133: 2012	Tested with appliance
-Electrolyte	Guangzhou Tinci Materials Technology Co., Ltd.	TC-E231	LiPF ₆ , EC/DEC/EMC	--	--
-Separator	Shanghai Energy New Materials Technology Co.,Ltd	ND16	PE, 16µm(Thickness)×20mm (Width)×507mm(Length) Shutdown temperature: 130°C	--	--
-Negative electrode	BTR	0.125mm(Thickness)×18mm(Width)×223mm(Length)	Graphite	--	--
-Positive electrode	BEIJING EASPRING MATERIAL Technology Co.,Ltd	0.110mm(Thickness)×17mm(Width)×254mm(Length)	LiCoO ₂	--	--
-Electrode tab	VENDATECH	0.1mm(Thickness)×2mm(Width)	Aluminum, Nickel	--	--
-Aluminum plastic film	DNP	D-EL40H	0.113mm(Thickness)×25mm(Width)×50mm(Length)	--	--
Supplementary information: ¹⁾ Provided evidence ensures the agreed level of compliance.					

7.2.1	TABLE: Continuous low rate charge (cells)					N/A
Model	Recommended charging method, (CC, CV, or CC/CV)	Recommended charging voltage V_c , (Vdc)	Recommended charging current I_{rec} , (A)	OCV at start of test, (Vdc)	Results	
Supplementary information: <ul style="list-style-type: none"> - No fire or explosion - No leakage - Leakage - Fire - Explosion - Bulge - Others (please explain) 						

7.2.2	TABLE: Vibration		N/A
Model	OCV at start of test, (Vdc)	Results	
Supplementary information: <ul style="list-style-type: none"> - No fire or explosion - No leakage - Leakage - Fire - Explosion - Bulge - Others (please explain) 			

7.3.1	TABLE: Incorrect installation (cells)		N/A
Model	OCV of reversed cell, (Vdc)	Results	

Supplementary information:

- No fire or explosion
- No leakage
- Leakage
- Fire
- Explosion
- Bulge
- Others (please explain)

7.3.2	TABLE: External short circuit					N/A
Model	Ambient (at 20°C ± 5°C or 55°C ± 5°C)	OCV at start of test, (Vdc)	Resistance of circuit, (Ω)	Maximum case temperature rise ΔT, (°C)	Results	

Supplementary information:

- No fire or explosion
- No leakage
- Leakage
- Fire
- Explosion
- Bulge
- Others (please explain)

7.3.6	TABLE: Crush			N/A
Model	OCV at start of test, (Vdc)	OCV at removal of crushing force, (Vdc)	Results	

Supplementary information: <ul style="list-style-type: none"> - No fire or explosion - No leakage - Leakage - Fire - Explosion - Bulge - Others (please explain)
--

7.3.8	TABLE: Overcharge				N/A
Model	OCV prior to charging, (Vdc)	Maximum charge current, (A)	Time for charging, (hours)	Results	

Supplementary information: <ul style="list-style-type: none"> - No fire or explosion - No leakage - Leakage - Fire - Explosion - Bulge - Others (please explain)
--

7.3.9	TABLE: Forced discharge (cells)				N/A
Model	OCV before application of reverse charge, (Vdc)	Measured reverse charge I_r , (A)	Time for reversed charge, (minutes)	Results	

Supplementary information: <ul style="list-style-type: none"> - No fire or explosion - No leakage - Leakage - Fire - Explosion - Bulge - Others (please explain)
--

8.2.1	TABLE: Continuous charging at constant voltage (cells)				P
Model	Recommended charging voltage V_c , (Vdc)	Recommended charging current I_{rec} , (A)	OCV at start of test, (Vdc)	Results	
Cell1#	4.20	0.028	4.20	P	
Cell 2#	4.20	0.028	4.20	P	
Cell 3#	4.20	0.028	4.19	P	
Cell 4#	4.20	0.028	4.19	P	
Cell 5#	4.20	0.028	4.19	P	
Supplementary information:					
<ul style="list-style-type: none"> - No fire - No explosion - No leakage 					

8.3.1	TABLE: External short circuit (cells)					P
Model	Ambient, (°C)	OCV at start of test, (Vdc)	Resistance of circuit, (Ω)	Maximum case temperature rise ΔT , (°C)	Results	
Samples charged at charging temperature upper limit (45°C)						
Cell 6#	22.1	4.24	0.094	113.7	P	
Cell 7#	22.1	4.24	0.086	132.1	P	
Cell 8#	22.1	4.23	0.092	124.3	P	
Cell 9#	22.1	4.24	0.085	130.6	P	
Cell 10#	22.1	4.23	0.087	123.2	P	
Samples charged at charging temperature lower limit (-5°C)						
Cell 11#	22.7	4.18	0.084	125.6	P	
Cell 12#	22.7	4.18	0.087	125.3	P	
Cell 13#	22.7	4.19	0.084	133.3	P	
Cell 14#	22.7	4.19	0.089	128.9	P	
Cell 15#	22.7	4.18	0.082	123.7	P	
Supplementary information:						
<ul style="list-style-type: none"> - No fire - No explosion 						

8.3.2	TABLE: External short circuit (Battery)					P
Model	Ambient, (°C)	OCV at start of test, (Vdc)	Resistance of circuit, (Ω)	Maximum case temperature rise ΔT , (°C)	Results	
Samples charged at charging temperature upper limit (45°C)						
Battery 1#	54.7	4.23	0.090	56.3	P	
Battery 2#	54.7	4.24	0.091	56.4	P	
Battery 3#	54.7	4.23	0.094	56.2	P	
Battery 4#	54.7	4.23	0.090	55.8	P	
Battery 5#	54.7	4.23	0.089	56.0	P	
Samples charged at charging temperature lower limit (-5°C)						
Battery 6#	54.7	4.19	0.092	55.6	P	
Battery 7#	54.7	4.20	0.096	55.7	P	
Battery 8#	54.7	4.19	0.095	55.8	P	
Battery 9#	54.7	4.19	0.089	55.7	P	
Battery 10#	54.7	4.19	0.092	55.9	P	
Supplementary information:						
- No fire						
- No explosion						

8.3.5	TABLE: Crush (cells)					P
Model	OCV at start of test, (Vdc)	OCV at removal of crushing force, (Vdc)	Width/diameter of cell before crush, (mm)	Required deformation for crush, (mm)	Results	
Samples charged at charging temperature upper limit (45°C)						
Cell 29#	4.23	4.23	--	--	P	
Cell 30#	4.24	4.24	--	--	P	
Cell 31#	4.23	4.23	--	--	P	
Cell 32#	4.24	4.24	--	--	P	
Cell 33#	4.23	4.23	--	--	P	
NOTE:						
A 13kN force applied at the cells.						
No voltage abrupt drop occurred.						
Supplementary information:						
- No fire or explosion						

8.3.6		TABLE: Over-charging of battery			P
Constant charging current (A).....:		0.28			—
Supply voltage (Vdc).....:		5			—
Model	OCV before charging, (Vdc)	Resistance of circuit, (Ω)	Maximum outer casing temperature, ($^{\circ}\text{C}$)	Results	
Battery 17#	3.19	0.018	29.4	P	
Battery 18#	3.15	0.019	29.4	P	
Battery 19#	3.15	0.019	29.3	P	
Battery 20#	3.12	0.018	29.1	P	
Battery 21#	3.16	0.019	29.2	P	
Supplementary information: - No fire or explosion					

8.3.7		TABLE: Forced discharge (cells)			P
Model	OCV before application of reverse charge, (Vdc)	Measured Reverse charge I_t , (A)	Time for reversed charge, (minutes)	Results	
Cell 34#	3.40	0.14	90	P	
Cell 35#	3.40	0.14	90	P	
Cell 36#	3.40	0.14	90	P	
Cell 37#	3.41	0.14	90	P	
Cell 38#	3.35	0.14	90	P	
Supplementary information: - No fire - No explosion					

8.3.8 T-5		TABLE: External short circuit (cells)				P
Model	Ambient, ($^{\circ}\text{C}$)	OCV at start of test, (Vdc)	Resistance of circuit, (Ω)	Maximum case temperature rise ΔT , ($^{\circ}\text{C}$)	Results	
Cell 39#	55.7	4.19	0.090	123.0	P	
Cell 40#	55.7	4.19	0.089	117.0	P	
Cell 41#	55.7	4.19	0.095	107.3	P	
Cell 42#	55.7	4.19	0.088	123.1	P	
Cell 43#	55.7	4.19	0.081	120.0	P	
Cell 44#	56.1	4.19	0.082	111.5	P	
Cell 45#	56.1	4.19	0.086	124.2	P	

Cell 46#	56.1	4.19	0.081	111.1	P
Cell 47#	56.1	4.19	0.085	119.5	P
Cell 48#	56.1	4.19	0.093	96.9	P

Supplementary information:

The external short-circuit test of 10 pcs samples performed after the test of Altitude, Thermal cycling, Vibration and Shock in sequence.

-No excessive temperature rise, no rupture, no explosion and no fire

8.3.9	TABLE: Forced internal short circuit (cells)						N/A
Number of sample	Chamber ambient, (°C)	OCV at start of test, (Vdc)	Particle location ¹⁾	Maximum applied pressure, (N)	Voltage drop, (mV)	Results	

Supplementary information:

¹⁾ Identify one of the following:

1: Nickel particle inserted between positive and negative (active material) coated area.

2: Nickel particle inserted between positive aluminium foil and negative active material coated area.

- No fire or explosion

--End of Report--

Product: Lithium-ion polymer battery

Type Designation: HCP402025W

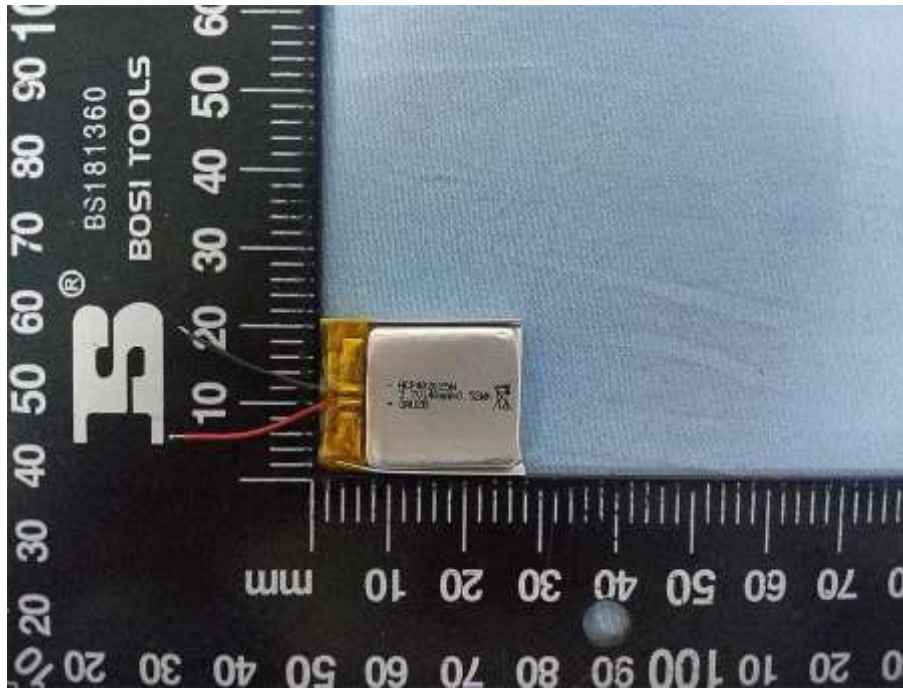


Figure 1 Front view of battery

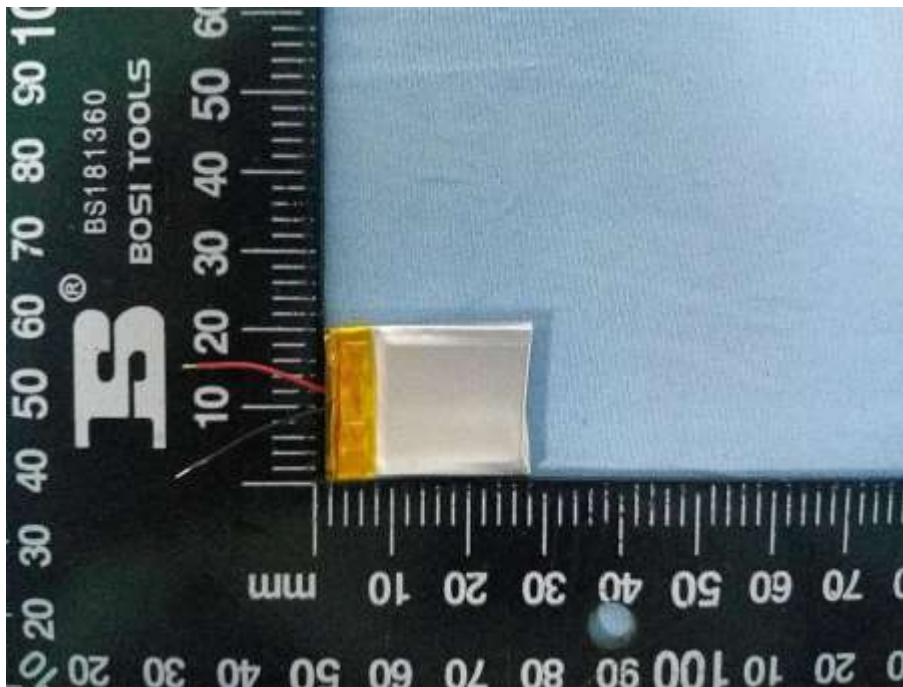


Figure 2 Back view of battery

Product: Lithium-ion polymer battery

Type Designation: HCP402025W

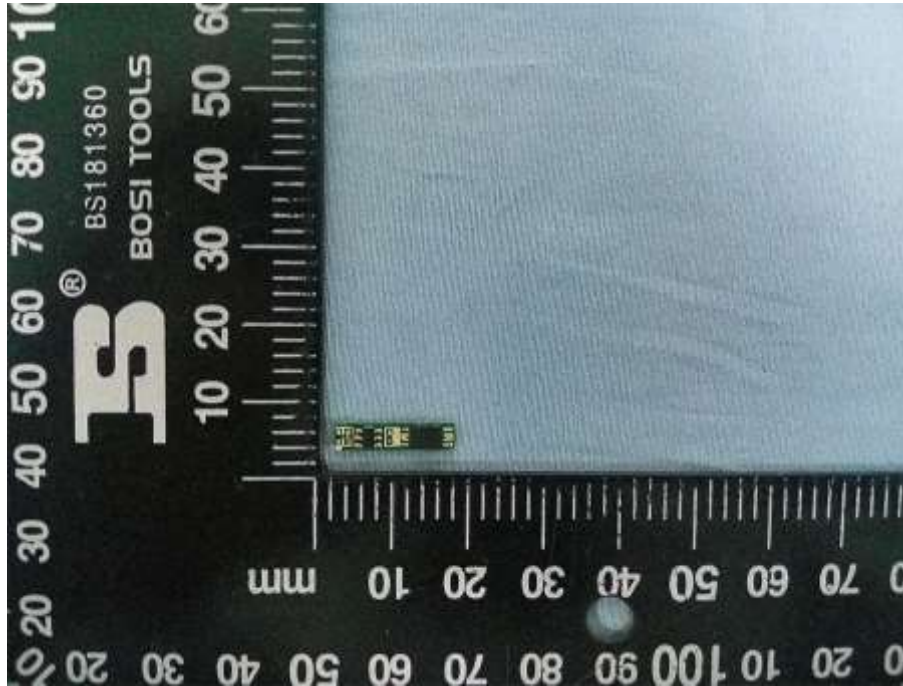


Figure 3 Component view of PCB

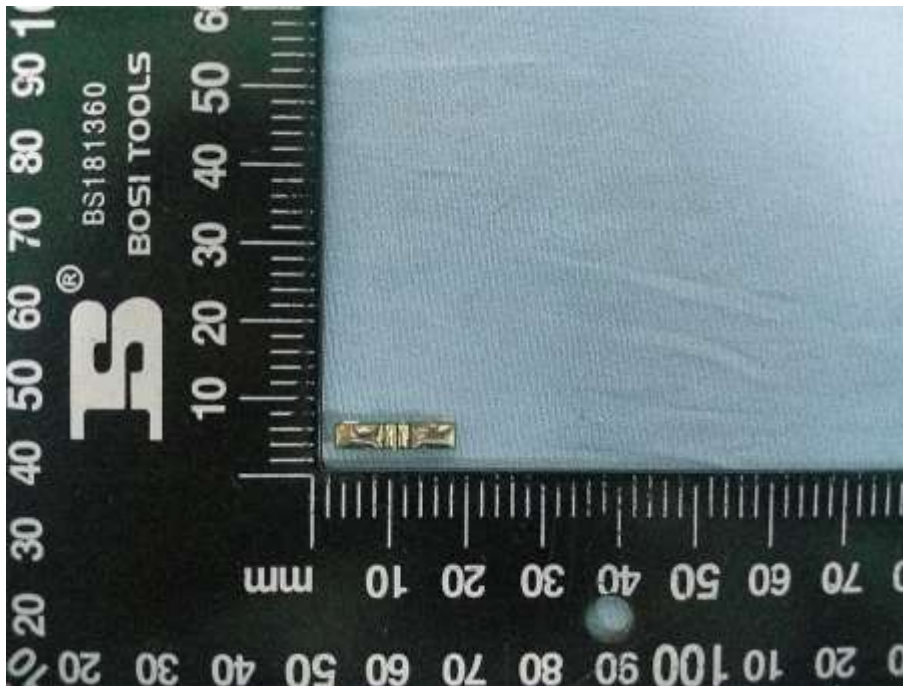


Figure 4 Trace view of PCB

Product: Lithium-ion polymer battery

Type Designation: HCP402025W

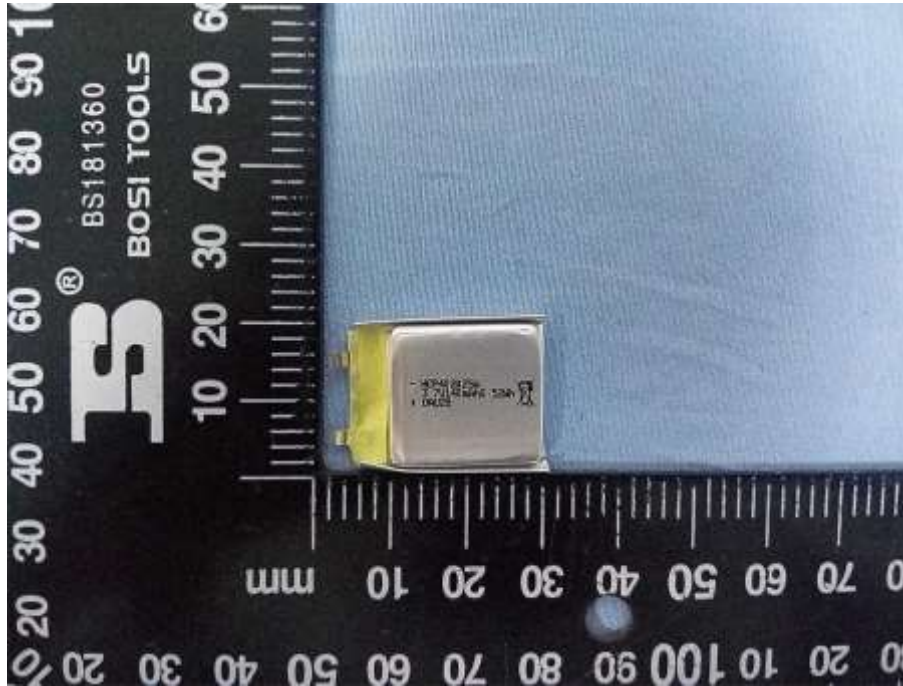


Figure 5 Front view of cell

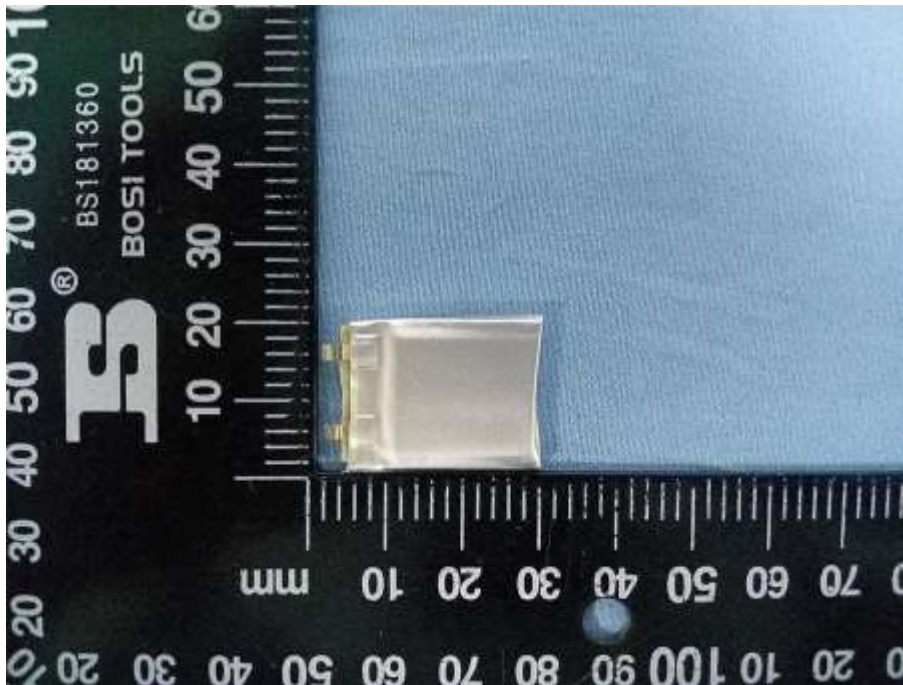


Figure 6 Back view of cell